

LOWER SCHOOL OPERATING MODES

BLUE

The school cautiously proceeds with many aspects of normal school operation while limiting some activities due to their elevated risk to the health and safety of our community.

- All Lower School students attend school five full days a week.
- Re-grouping for math and reading.
- Special Areas operate as normal with students transitioning to special area classrooms.
- Recess will be held on the playground.
- Chapel held in Auditorium 2x a week for 2 grades at a time (seating every other seat)
- Lunch will be served in the dining hall with spaced seating and staggered lunch times.

YELLOW

Employs multiple physical distancing strategies to limit transmission risks by increasing physical space between students and limiting interactions in large group settings.

- All Lower School students attend school five full days a week.
- All classrooms are set to maintain a 3-6 foot distance between students and also the teacher.
- Re-grouping for math and reading will occur with one grade transitioning at a time.
- Special Area Teachers will rotate into homerooms
- Planned games and routines will replace free play on playground structures for recess.
- Chapel held in Auditorium twice a week for two grades at a time (seating every other seat)
- Lunch will be served in classrooms.

ORANGE

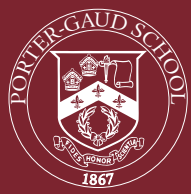
May reduce the total number of people who can be on campus or a portion of the campus at any time to maximize social distancing and minimize the mixing of student groups.

- All Lower School students attend school five full days a week.
- All classrooms are set to maintain a 3-6 foot distance between students and also the teacher.
- Students will remain in their homeroom class throughout the day.
- Teachers will differentiate instructional support in math and reading to meet the needs of various group levels in a homeroom class.
- Special Area teachers will rotate into homerooms.
- Planned games and routines will replace free play on playground structures.
- No LS Chapel in Auditorium. Pre-recorded or Zoom Chapel in classrooms once a week
- Lunch will be served in classrooms.

RED

Close the campus or a portion of the campus to students. Our virtual learning plan is in short stints by division or whole campus. (Led by state government mandate or positive cases)

- All classes are virtual.
- Grouping in math and reading will be maintained via online instruction preserving the integrity of the academic program.
- Social Studies and writing will be taught during scheduled homeroom time throughout the week.



MIDDLE SCHOOL OPERATING MODES

BLUE

The school cautiously proceeds with many aspects of normal school operation while limiting some activities due to their elevated risk to the health and safety of our community.

- All Middle School students are able to attend school five full days a week.
- Special Areas operate as normal with students transitioning to special area classrooms
- Outdoor spaces (Shady Acres, the Green, and the practice fields), will allow for outside play, organized by grade level.
- Chapel held in Auditorium twice a week for two grades at a time (seating every other seat)
- Life 101 will meet via class meetings on a grade level rotation
- Lunch will be served in the dining hall in shifts, two grades at a time.

YELLOW

Employs multiple physical distancing strategies to limit transmission risks by increasing physical space between students and limiting interactions in large group settings.

- All Middle School students are able to attend school five full days a week.
- Class times are shortened by 10 minutes for each block to allow for staggered passing times and cleaning of desk surfaces.
- Faculty and Staff oversee transitions to aid in distancing as well as classroom cleaning.
- Lunch will be served in dining hall in shifts, with distancing at tables and no self service items, 2 grades at a time
- Life 101 will meet via class meetings on a grade level rotation
- Chapel held in Auditorium twice a week for two grades at a time (seating every other seat)
- Classrooms are set to maintain 3-6 ft distance between students as well as the teacher.

ORANGE

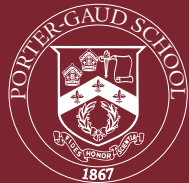
May reduce the total number of people who can be on campus or a portion of the campus at any time to maximize social distancing and minimize the mixing of student groups.

- Middle School will have two modes of operating. In both modes, classrooms are set to maintain a 6 ft distance between students and students and teacher. Directional arrows, designated exit/entrances, hallway sanitizing stations, pre-school day screening, staggered arrival and dismissal work to minimize large gatherings of students at transition points. Lunches served by cohort/fixed groups, but utilizing outdoor seating when weather permits. Wednesdays include designated extra help time with teachers, advisory meetings, administrative academic meetings, Chapel, Jewish Life, Life 101, and some special area classes for 5th and 6th grades.
- Mode 1: Classes will meet in person twice a week on a scheduled basis by A/B cohort of Monday/Thursday or Tuesday/Friday. Students are in fixed groups of 9-10 students. Asynchronous working days complete the week and include structured organizational study hall models to facilitate extra help and teacher/student communication. Math and World Language levels are maintained with instruction via Zoom and with opportunities for individual extra help. A/B Cohort groups will be established with siblings in mind to our best ability. Lunch served by advisory groups, utilizing outdoor seating when weather permits.
- Mode 2: Classes will meet in person four days a week for both A and B cohorts. Students are in fixed groups of no more than 18 students. These students attend all classes together and remain in one classroom for the day (with the exception of lunch, staggered breaks, etc). Math and World Language levels are maintained with instruction via Zoom and with opportunities for individual extra help.

RED

Close the campus or a portion of the campus to students. Our virtual learning plan is in short stints by division or whole campus. (Led by state government mandate or positive cases)

- All classes are virtual.
- All classes meet twice a week for 45-60 minutes of time.
- Each day closes with a grade level organizational study hall (review of upcoming deadlines and assignments, check ins for workload/help needed).
- Teachers will have access to specific students if they need to set up a Zoom for extra help or assignment submission. The study hall proctor will help facilitate continued communication between the students and teachers.
- Wednesdays are virtual/Zoom meeting days designated for extra help time with teachers, advisory, parent/student/administrative academic meetings, Chapel, Jewish Life, Life 101, and some special area classes for 5th and 6th grades.



UPPER SCHOOL OPERATING MODES

BLUE

The school cautiously proceeds with many aspects of normal school operation while limiting some activities due to their elevated risk to the health and safety of our community.

- All Upper School students are able to attend school five full days a week.
- Operate a regular A/B week Upper School schedule.
- Community schedule including chapel once a week.
- Lunch will be served in the dining hall.

YELLOW

Employs multiple physical distancing strategies to limit transmission risks by increasing physical space between students and limiting interactions in large group settings.

- All US students are able to attend school five full days a week.
- Upper School moves to a rotating block schedule with each class meeting five times over 10 days.
- Classrooms are set to maintain 3-6 ft distance between students as well as the teacher.
- Advisory meets three times over a two-week cycle and Chapel/Jewish Life held through Zoom in Advisory once a week.
- Lunch will be served in the dining hall with distancing at tables and no self-service items.
- We will split lunch periods with 50% of students in the dining hall at a time and the other 50% in advisory.

ORANGE

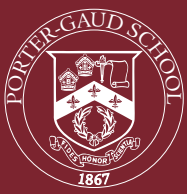
May reduce the total number of people who can be on campus or a portion of the campus at any time to maximize social distancing and minimize the mixing of student groups.

- All students have four school days - two on-campus and two virtual learning days. Group 1 (50% of the student body) will be on campus while Group 2 (the other 50%) is engaged in virtual learning at that time. Then Group 2 comes to campus while Group 1 has virtual learning.
- Monday, Tuesday, Thursday, and Friday are instructional days.
- Wednesdays include designated extra help time with teachers, advisory meetings, parent/student/administrative academic meetings, Chapel, Jewish Life, and Community.
- Lunch served by advisory groups, utilizing outdoor seating when weather permits.
- Classrooms are set to maintain a 3-6 ft distance between students as well as the teacher.

RED

Close the campus or a portion of the campus to students. Our virtual learning plan is in short stints by division or whole campus. (Led by state government mandate or positive cases)

- All classes are virtual.
- All classes meet virtually twice per week for 60 min per session.
- Upper School daily schedule has two sets of block classes per week with a community and extra help day on Wednesdays.
- Wednesdays include designated extra help time with teachers, advisory meetings, parent/student/administrative academic meetings, Chapel, Jewish Life, and Community.



ALL-SCHOOL PROCEDURES

HEATH & SAFETY PROTOCOLS

BLUE

- Increased cleaning between classes and throughout the school day.
- Regularly enforced hand hygiene.
- Enhanced monitoring of student, faculty, and staff health.
- Visitor access to campus may be restricted.

YELLOW

- Increased cleaning between classes and throughout the school day.
- Regularly enforced hand hygiene.
- Enhanced monitoring of student, faculty, and staff health.
- Student seating and overall classroom organization will minimize contact between students and provide as much physical distance between students and teachers as possible.
- No close physical contact activities. School arrivals,, transitional times and school dismissals will be coordinated to limit mixing of groups. Students will not share supplies. Locker use will be restricted.
- Visitor access is restricted to essential visitors to limited areas of campus.

ORANGE

- Increased cleaning between classes and throughout the school day.
- Regularly enforced hand hygiene.
- Before-school day health screening of students, faculty and staff.
- Directional arrows, designated exit/entrance, hallway sanitizing stations, staggered arrival and dismissal times to minimize large gatherings of students at transition points.
- Students will not share supplies. Locker use will be restricted.
- A CDC-approved cloth face covering over the nose and mouth will be worn on campus by all Faculty, Staff and Students.
- Visitor access is restricted to essential personnel only.

RED

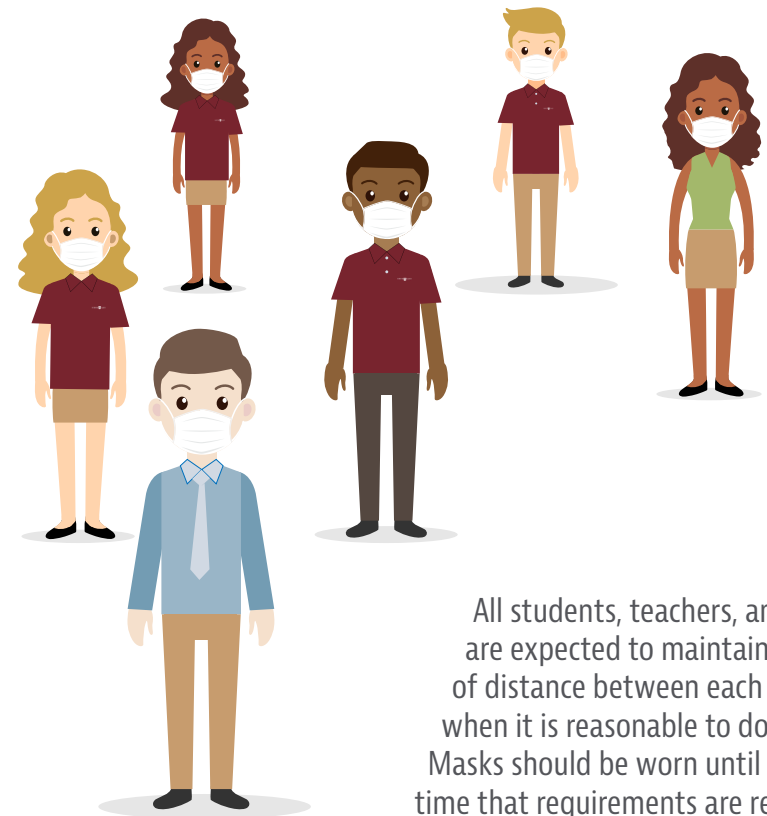
- Campus is closed.
- Remote monitoring of student, faculty and staff health.

REMOTE LEARNERS

LS students who are at home for health reasons will access instruction (live classes) and content via Zoom, Nearpod, and See Saw.

MS/US Students who are at home for health reasons will access instruction (live classes) and content via Zoom and PG portal.

PHYSICAL DISTANCING/MASKS



All students, teachers, and staff are expected to maintain 6 feet of distance between each other when it is reasonable to do so. Masks should be worn until such time that requirements are relaxed.